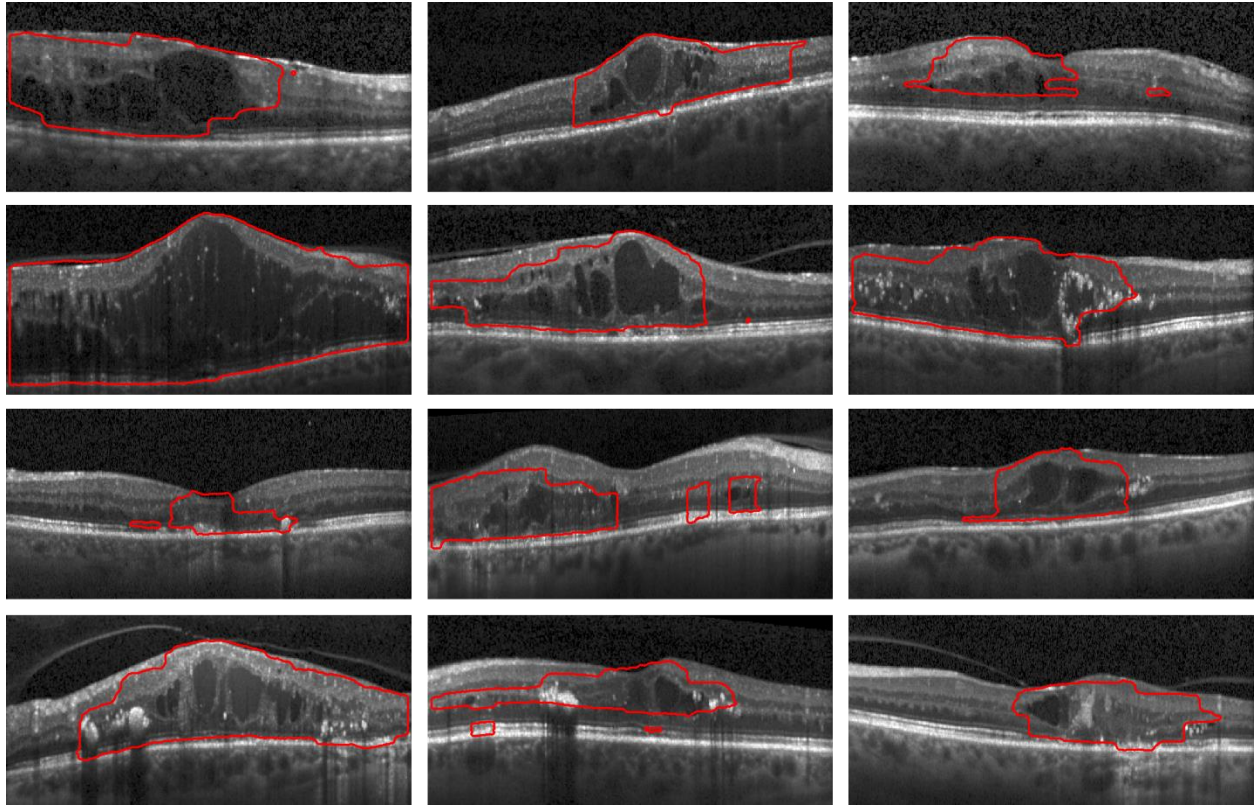


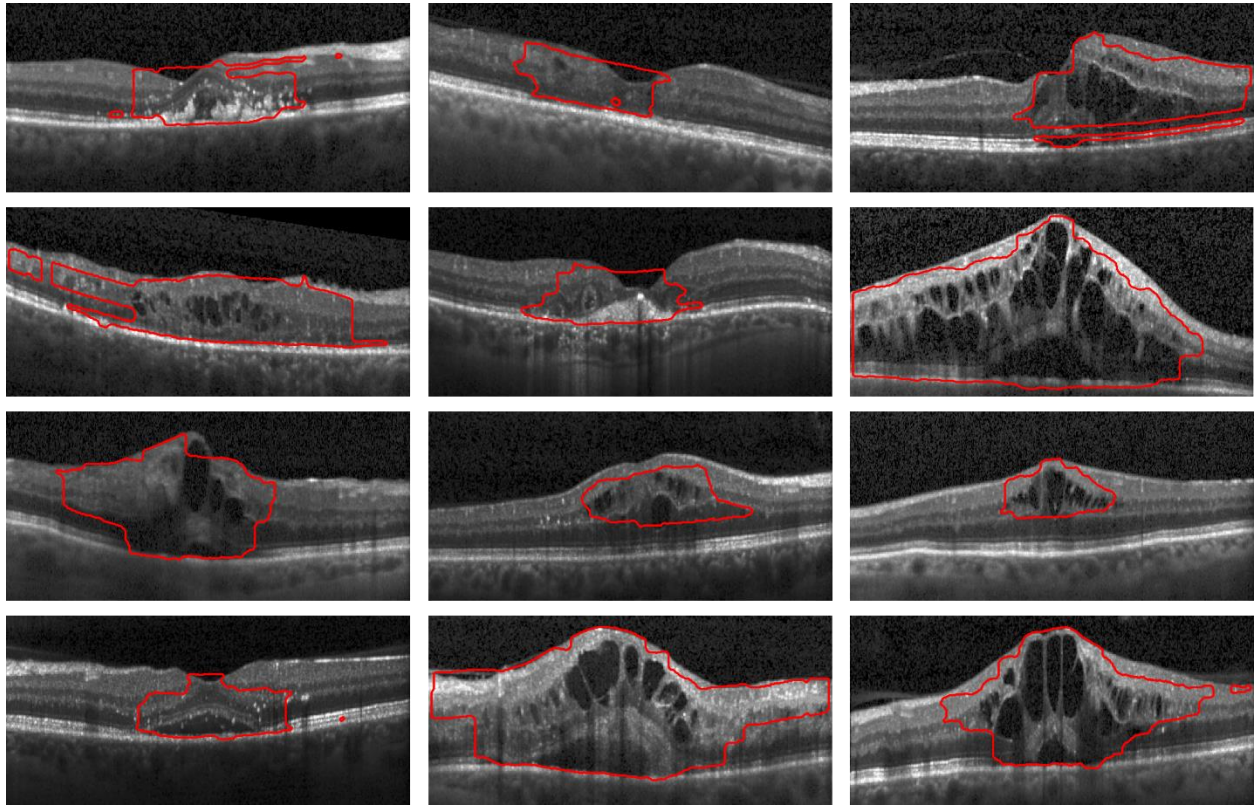
Supplementary Material

S1. Qualitative Results – DME



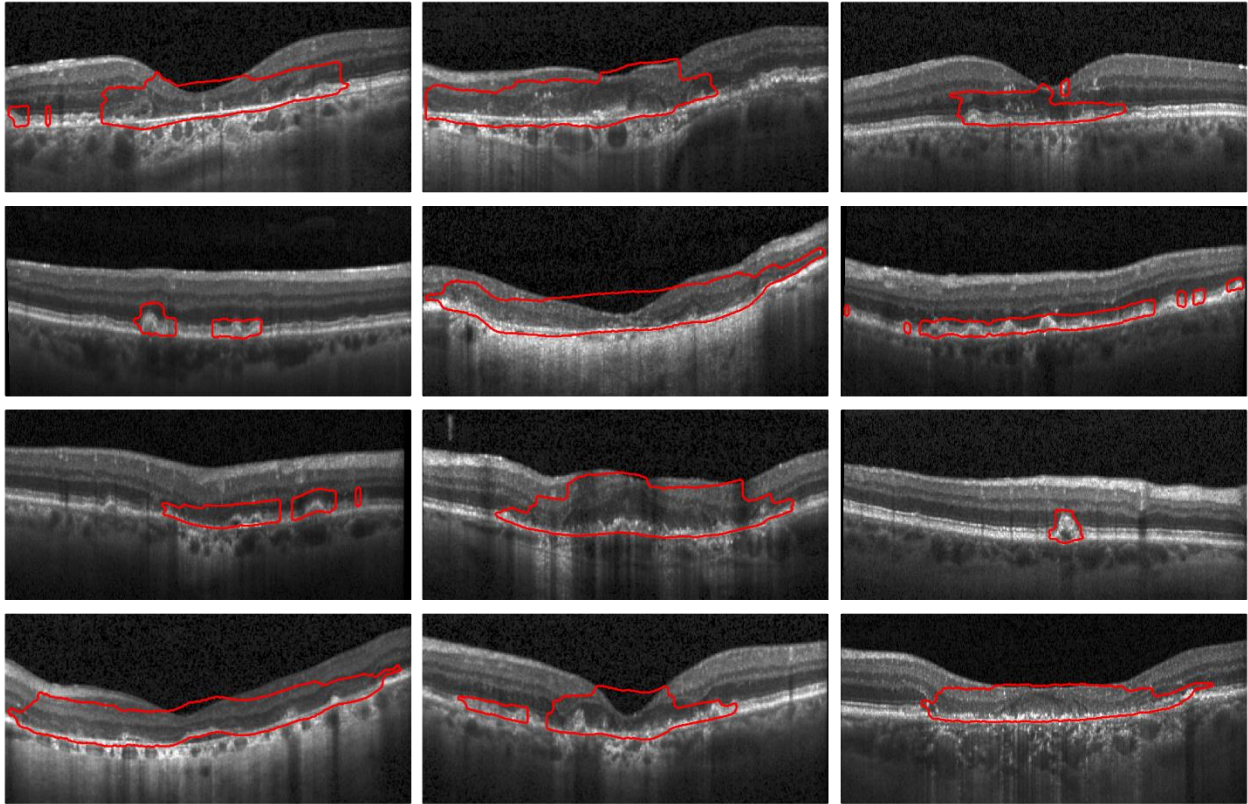
Supplementary Figure 1. Qualitative results of the proposed anomaly detection method on the diabetic macular edema (DME) dataset. All images correspond to central B-scans of the volumes. The red contours depict the boundaries of the segmented anomalous regions.

S2. Qualitative Results – RVO



Supplementary Figure 2. Qualitative results of the proposed anomaly detection method on the retinal vein occlusion (RVO) dataset. All images correspond to central B-scans of the volumes. The red contours depict the boundaries of the segmented anomalous regions.

S3. Qualitative Results – GA



Supplementary Figure 3. Qualitative results of the proposed anomaly detection method on the geographic atrophy (GA) dataset. All images correspond to central B-scans of the volumes. The red contours depict the boundaries of the segmented anomalous regions.